

Post Graduate Prep Course Address:

Alameda das Algarobas, n. 73 - Caminho das Árvores
Salvador - Bahia | Brazil | Postal Code 41820-500

School Address:

Rua das Rosas, n. 418 - Pituba - Salvador - Bahia
Brazil | Postal Code 41810-070



Member of the
College Board
CEEB-SAT code:
910096



2023 academic
year calendar:
Feb 06 - Dec 01

School Entrance System:

- | Admission Test - ABC in portuguese (Basic Analysis of Knowledge)
- | Interview with parents and student

Disciplines:

- | Math
- | Language (Portuguese, Grammar, Literature and English)
- | Essay Composition
- | Natural Sciences (Chemistry, Biology and Physics)
- | Geography and Current Events
- | Brazilian and World History
- | Philosophy
- | Sociology
- | Physical Education
- | Life Management
- | Arts
- | Model UN and Diplomacy
- | Statistics
- | Scientific Initiation
- | Robotics
- | Computational Thinking

Electives Classes:

The goal is helping the students strengthen essential STEM skills:

- | Math from scratch
- | Physics from scratch
- | Chemistry from scratch

Extracurricular Activities:

- | English Course / Leffler Immersion
- | Debate Club
- | Journalism Club / NewsLeffler
- | LICAP Classes

Disciplines Tracks:

A set of disciplines and projects the students must choose to do over the course of the High School years. They have the objective of substitute the older curriculum with a more flexible one, to better meet the needs of each student.

- | Data Analysis
- | Artificial Intelligence
- | Electrical Circuits
- | Young Programmer and Young Scientist
- | Scientific Research
- | Debate Club
- | Communication
- | Creative Writing

Curriculum:

Students follow the Brazilian National Curriculum; AP and IB Courses are not offered.

Additional Prep Tracks:

- | Medical School Admissions
- | Advanced Class ITA/IME Prep Course
- | Academic Olympiads
- | International Essay Competitions

Academic Team:

School Principal

José Humberto de Souza Prates
humbertoprates@colegioleffler.com.br

Technology Director

Breno Gramacho
brenosantos@colegioleffler.com.br

Pedagogical director:

Luciene Bastos
lucienebastos@colegioleffler.com.br

Counsellor

Nicole Ribeiro
nicole.frutoso@colegioleffler.com.br

Assistant Counsellor

Léo Cunha
leocunha@colegioleffler.com.br

Counsellors Team Phone Number

+55 71 98346-7414

Enrollment:

176 students in grade 6-12
80 students in Post Graduate Prep Course
46 students in Graduation Class

Grading Scale:

Leffler uses a Brazilian Grading System which is 0.0-10.0 - The minimum passing grade is 6.0 in each subject and it is the only requirement to graduation.

History

Colegio Leffleris is a private institution, also known as the Leffler International Olympic School, was founded in 2020 by long term Educators from Bahia, Humberto Prates and Luciene Bastos. After 3 years providing highschool education, in 2023 the school opened a second space that also offers middle school classes.

For the last 25 years, as leaders of Curso Interseção, Luciene and Humberto ran the most successful post graduate prep courses for Brazil's most competitive exams: IME, ITA, FUVEST, UNICAMP and ENEM. Their

course was and still is the only program to regularly approve students from Bahia into Brazil's prestigious military academies, IME and ITA. While managing the PG course, they also coordinate an Olympiad prep track for High School students that provides a more diverse, complete and rigorous curriculum as well as additional preparation courses for International Leadership Programs, Summer Programs, Academic Olympiads and Essay Competitions.

Mission

Leffler was founded with the mission to provide high school education with more care and in a smaller, more supportive atmosphere, with reduced class sizes and augmented class hours complemented by a variety of extracurricular activities, specially in STEAM. All students have access to specialty classes on the most diverse topics, including those concentrating on Physics and Chemistry, Brazilian National History, and many other Olympiads, in which Leffler's students won medals at the nationals in both operating years.

The school aims to promote a global outlook with additional advanced language classes and opportunities for international exchanges and educational events. Amongst many others, these events include the Harvard MUN competition, in which students had an outstanding performance recognized by the university. In addition, we also encourage and support essay competitions as a mean for students to develop their writing and critical thinking.

Above all, Leffler is a place where students are encouraged to go beyond their own expectations and get in direct touch with the directors, coordinators and counselors to propose their own educational projects, aiming to improve diversity in education, which has been extremely effective in helping develop new skills for students. In this vein, the school aims to provide every possible resource to meet the students' proposed educational projects.

Located in Salvador, the capital of Afro-Brazilian culture, we leverage our location and our diverse student body (roughly 40% of our student body self-defines as black or mixed race) to offer unique interdisciplinary workshops about humanity topics and current events, and encourage our students' political activity in the city, state and national stage, with participation in the National Youth Parliament Competition. We also are very proud of our students for organizing the First MUN competition for Public Schools in our state.

Leffler's Core Values:



Academic Excellence



5.0 Education



Student's Autonomy



Social and Political Engagement



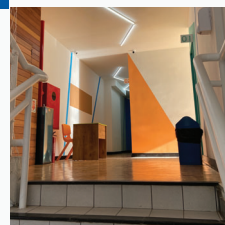
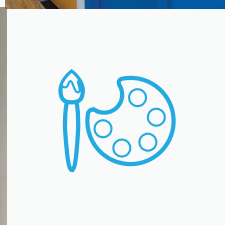
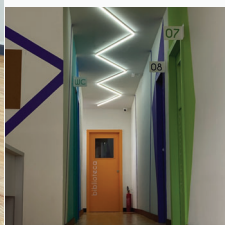
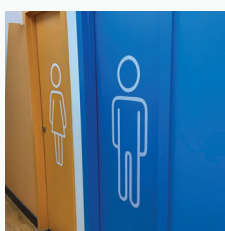
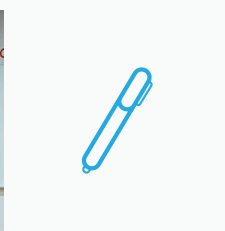
Respect



Collaboration

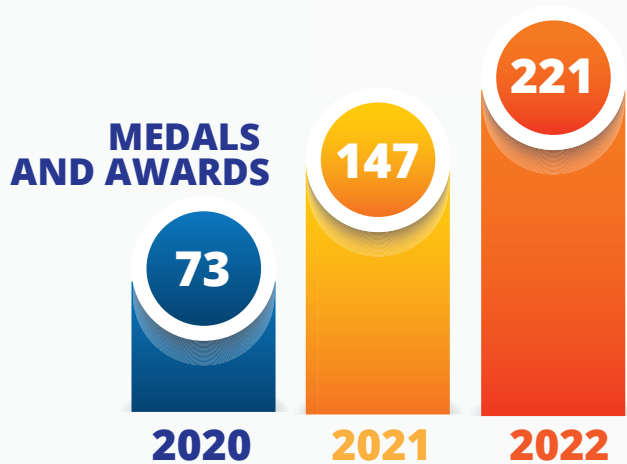


Leadership



Leffler students participated and won medals in the following Brazilian National Olympiads:

- | Bahia Women's Mathematics Olympiad (OFMBA)
- | Bahia's State Mathematics Olympiad (OMEBA)
- | Kangaroo International Mathematics Olympiad
- | Shark Olympiad of Mathematics (OTM)
- | Brazilian Robotics Olympiad (OBR)
- | Brazilian Olympiad of Knowledge (OBS)
- | National Science Olympiad (ONC)
- | Brazilian Astronomy and Aeronautics Olympiad (OBA)
- | Brazilian Geography Olympiad (OBG)
- | National History of Brazil Olympiad (ONHB)
- | Brazilian Linguistics Olympiad (OBL)
- | Brazilian Physics Olympiad (OBF)
- | Brazilian Chemistry Olympiad (OBQ)
- | Brazilian Biology Olympiad (OBB)
- | Virtual Physics Olympiad (OVF)
- | Brazilian Mathematics Olympiad (OBM)
- | Brazilian Public School Mathematics Olympiad (OBMEP)
- | Stolimpíadas (prep to the Brazilian Mathematics Olympiad)
- | Mathématiques sans Frontières Olympiad
- | Asia International Mathematical Olympiad (AIMO)
- | Bahian Chemistry Olympiad (OBAQ)
- | Brazilian Science and Engineering Fair (FEBRACE) -
Finalist with the project "Affordable Vacuum Food Sealer"





Students enrolled in the school and the PG program were approved in the following universities:

International Universities:

- | Drake University (USA)
- | Alfred University (USA)
- | Loyola University Chicago (USA)
- | Stetson University (USA)
- | Davidson College (USA)
- | Syracuse University (USA)
- | University of Wisconsin-Madison (USA)
- | University of Pennsylvania (USA)
- | Dartmouth College (USA)
- | Duke University (USA)
- | Yale University (USA)

Brazilian Universities:

- | Instituto Militar de Engenharia (IME)
- | Universidade Federal da Bahia (UFBA)
- | Centro Universitário Dom Pedro II (UNIDOM)
- | Centro Universitário Faculdade de Tecnologia e Ciências (UNIFTC)
- | Escola Bahiana de Medicina e Saúde Pública (EBMSP)
- | Universidade Estadual de Campinas (UNICAMP)
- | Faculdade Baiana de Direito

- | Universidade Salvador (UNIFACS)
- | Centro Universitário Jorge Amado (UNIJORGE)
- | Universidade Federal de São Paulo (UNIFESP)
- | Universidade Federal do Rio de Janeiro (UFRJ)
- | União Metropolitana de Educação e Cultura (UNIME)
- | Universidade Federal de São Carlos (UFSCAR)
- | Universidade de Brasília (UNB)
- | Instituto Federal de Educação, Ciência e Tecnologia da Bahia (IFBA)
- | Universidade de São Paulo (USP)
- | Instituto de Ensino e Pesquisa (INSPER)
- | Fundação Getulio Vargas (FGV)
- | Universidade Estadual Paulista (UNESP)
- | Universidade Estadual de Feira de Santana (UEFS)
- | Instituto Tecnológico de Aeronáutica (ITA)
- | Universidade Federal do Sul da Bahia (UFSB)
- | Universidade do Estado de Santa Catarina (UDESC)
- | Instituto Federal do Paraná (IFPR)
- | Universidade do Estado da Bahia (UNEB)
- | Universidade Federal de Minas Gerais (UFMG)
- | Faculdades Ibmec
- | Link School of Business (LSB)

Accreditation & Associations:



www.colegioleffler.com.br | [f](https://www.facebook.com/colegioleffler) [i](https://www.instagram.com/colegioleffler) [in](https://www.linkedin.com/company/colegioleffler) [yt](https://www.youtube.com/channel/UC...) [d](https://www.tiktok.com/@colegioleffler) /colegioleffler

Phone: +55 71 3506-2609 | Phone: +55 71 2132-7003 / +55 71 99972-9085

lefflerios@colegioleffler.com.br

